



Portal > Knowledgebase > Other Devices > BEAM > RST100 RemoteSAT > Updating Firmware to Version 4.16 BEAM RST100

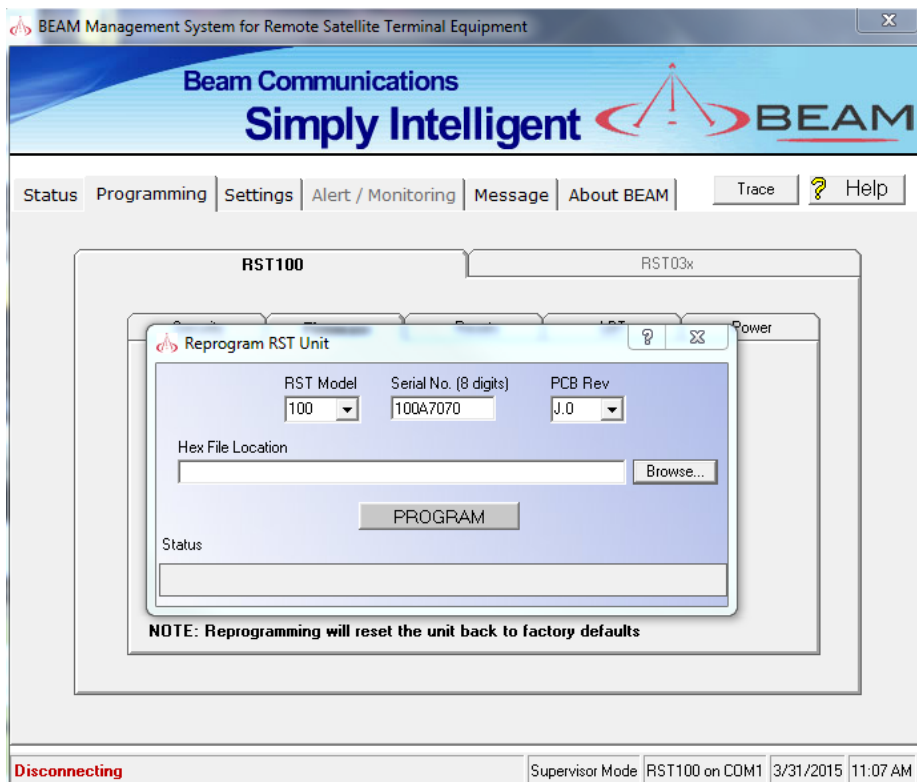
---

## Updating Firmware to Version 4.16 BEAM RST100

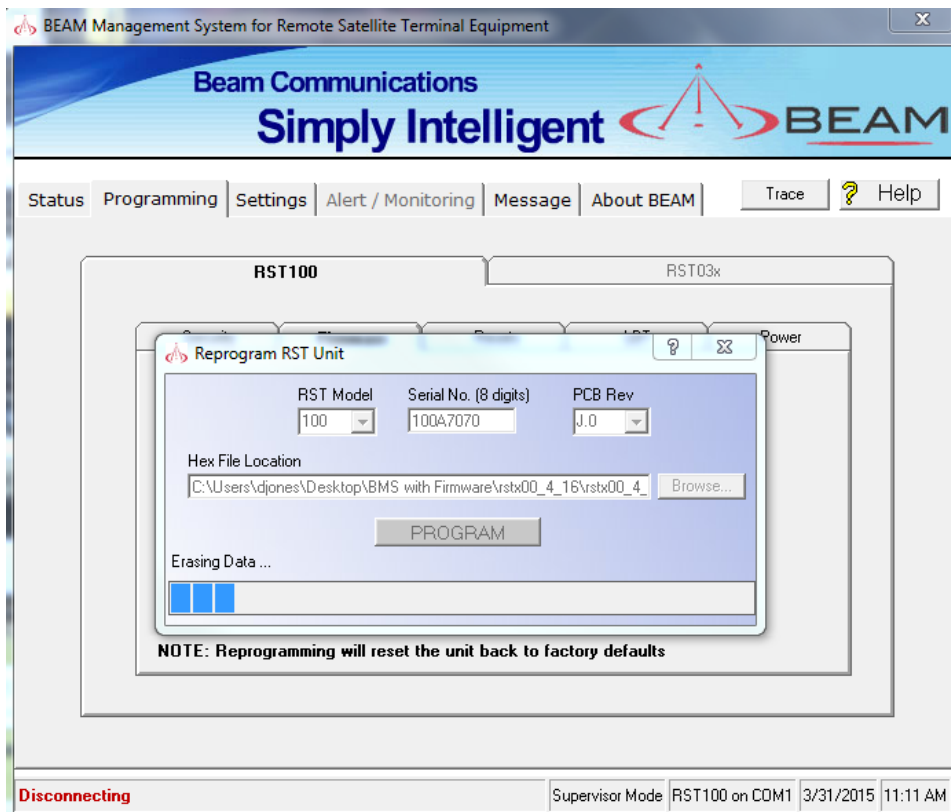
David Jones - 2015-03-31 - in RST100 RemoteSAT

The BEAM RST100 firmware version 4.16 will resolve the Iridium time server reset issue also known as the re-epoch. To update your RST100 terminal you need to follow these steps:

1. Download and install the Beam Management Software: [DOWNLOAD](#)
2. Download the Firmware file version 4.16: [DOWNLOAD](#)
3. Connect the RST100 device to your computer using a serial cable, the cable will plug into the RST100 Log Port
4. Power on the RST100
5. Open the BEAM Management Software
6. You will be asked to enter the supervisor PIN code, enter 3170 and then click on the "OK" button
7. The BMS software will open
8. Click on the "Programming" tab
9. Click on the "Firmware" tab
10. Click on the "Reprogram Terminal" button
11. A warning will appear with the text: "Are you sure you want to reprogramming this unit, all settings will be lost?" Click the "Yes" button
12. Another warning will appear with the following text: "Please unplug External Ringer, if one is fitted to the Comm Port." Click on the "OK" button
13. You will see this pop-up:



14. Click on the "Browse" button
15. Find and open the downloaded file "rstx00\_4\_16"
16. Select the file "rstx00\_4\_16.hex" and then click on the "Open" button
17. Click on the "PROGRAM" button to start flashing the firmware
18. A popup will appear asking you to power cycle the RST100 unit, press the reset button on the back of the unit and then wait 10 seconds, press the "OK" button to continue
19. The RST100 will begin the firmware upgrade process:



20. Once the programming has been completed you will be asked to set the unit back to the factory default settings, select "International"

21. Press the "Reset" button on the back of the RST100 to complete the upgrade