



[Portal](#) > [Knowledgebase](#) > [GeoPro](#) > [GeoPro Web App](#) > [Web App for Administrators](#) > [Home Tab / Map View](#) > [How-To](#) > [Broadcasting a Message from the Home tab \[GPv3\]](#)

Broadcasting a Message from the Home tab [GPv3]

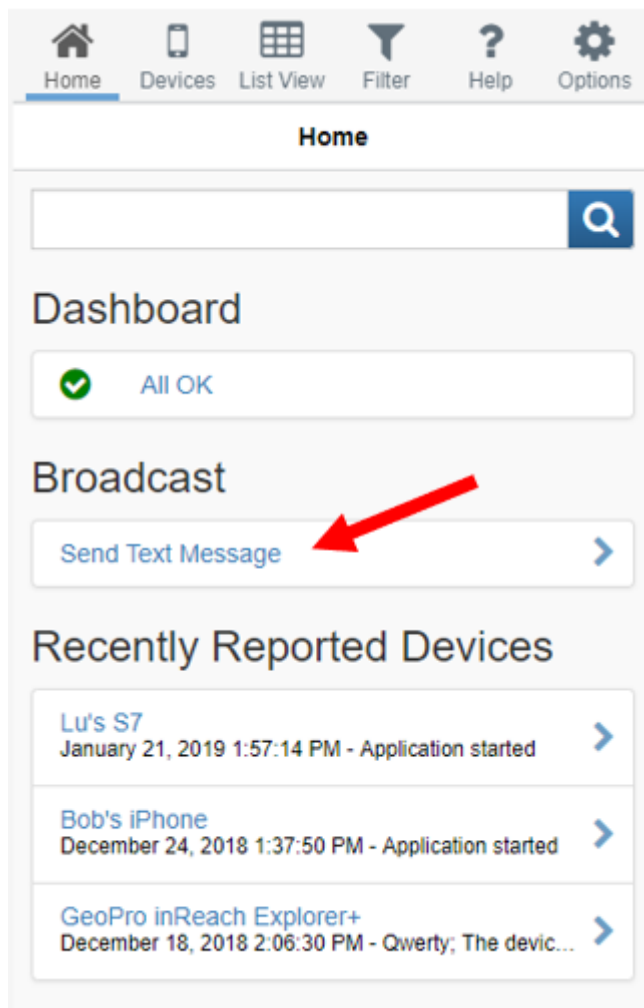
Lu Parente - 2019-01-23 - in [How-To](#)

The **Home** tab of the GeoPro web app allows you to **broadcast a message** to **all devices** on your GeoPro account. When broadcasting a message, you can send a message to all devices, devices in a specific country, geofence, or define a custom area on the map.

Note: Using this function will send a text message to all active devices, even those that are powered off.

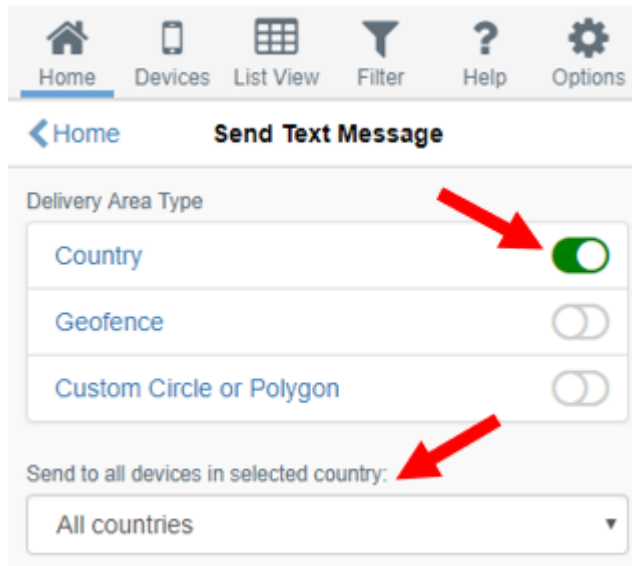
To broadcast a message perform the following:

1. Navigate to the **Home** tab and select **Send Text Message**.

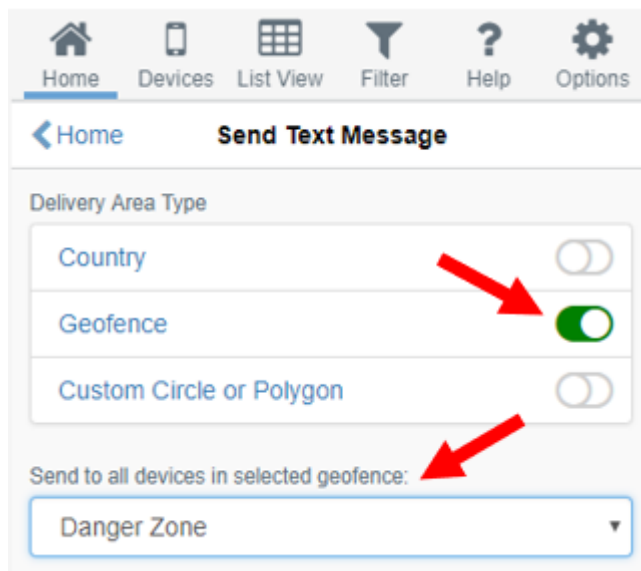


2. Select a **Delivery Area Type** using the toggles.

- To broadcast a message to all devices, select **Country** followed by **All Countries**
- To broadcast a message to devices in a specific country, select **Country** followed by the desired country in the **Send to all devices in selected country** drop down.



- To broadcast a message to devices in a specific geofence, select **Geofence** followed by the desired geofence in the **Send to all devices in selected geofence** drop down.



- To broadcast a message to devices in a custom defined area on the map, select **Custom Circle or Polygon**, then select the desired shape you would like to use to draw on the map from the **Send to all devices in custom** drop down. Draw on the map to define your message area and resize as necessary.

Home Devices List View Filter Help Options

Send Text Message

Delivery Area Type

Country

Geofence

Custom Circle or Polygon

Send to all devices in custom:

3. Enter the desired text you would like to broadcast (up to 160 characters) and press **Send**.

Note: Only devices capable of receiving text messages will receive the message and a list of all recipient devices will be displayed.

Message will be sent to the following devices:

- GGv3 Android
- GPv3.1.2 Test
- GeoPro Nano TS
- GeoPro inReach Explorer+
- LP Android on BB
- Lu's inReach SE2

Message

Use SMS (where supported)

Please note devices must be on and have coverage to receive the message.

Send Cancel